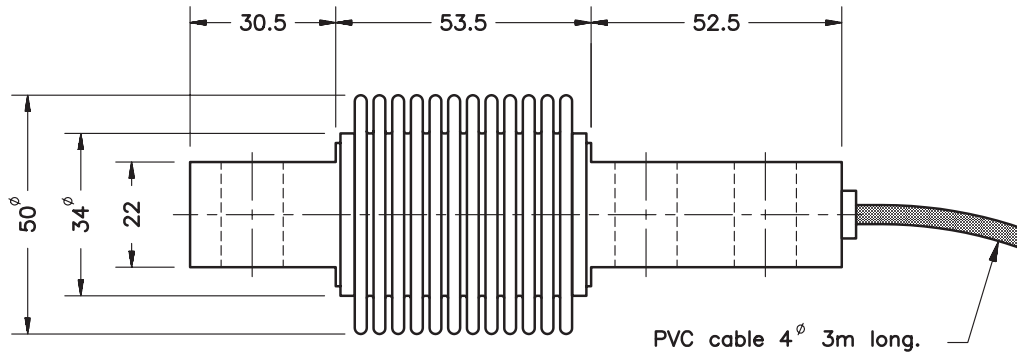


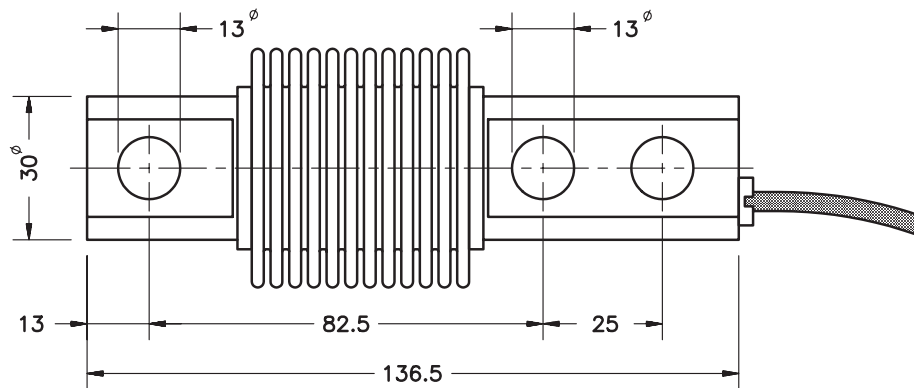
- Bending beam load cell
- Fully stainless steel
- 3000 divisions O.I.M.L. R60 class C
- Hermetically sealed, fully welded
- Protected IP 68 (EN 60529)
- Available in **ATEX**  version (optional)
Zone 0-1-2 (gas) and 20-21-22 (dust)
- Buigstaaf met dubbel veer element
- Volledig in roestvast staal
- Nauwkeurigheid 1:3000 OIML R60 klasse C
- Hermetisch dichtgelast
- Dichtheidsklasse IP 68 (EN 60529)
- Leverbaar in **ATEX**  uitvoering (optie)
zone 0-1-2 (gas) en 20-21-22 (stof)

Model	Nominal capacity Meetbereik E max	Accuracy class Nauwkeurigheid n. OIML	Minimum division Kleinste schaaldeel v min	Service load Max. belasting 150 % Emax	Safe load Breuklast 200 % Emax
340 15 kg	15 kg	3000	1.5 g	22 kg	30 kg
340 30 kg	30 kg	3000	3 g	45 kg	60 kg
340 50 kg	50 kg	3000	5 g	75 kg	100 kg
340 75 kg	75 kg	3000	7.5 g	112 kg	150 kg
340 100 kg	100 kg	3000	10 g	150 kg	200 kg
340 150 kg	150 kg	3000	15 g	225 kg	300 kg
340 200 kg	200 kg	3000	20 g	300 kg	400 kg
340 250 kg	250 kg	3000	25 g	375 kg	500 kg
340 300 kg	300 kg	3000	30 g	450 kg	600 kg
340 500 kg	500 kg	3000	50 g	750 kg	1000 kg
340 750 kg	750 kg	3000	75 g	1125 kg	1500 kg
340 1000 kg	1000 kg	3000	100 g	1500 kg	2000 kg
340 1500 kg	1500 kg	2000	150 g	2250 kg	2500 kg

MODEL 340



PVC cable 4 ϕ 3m long.

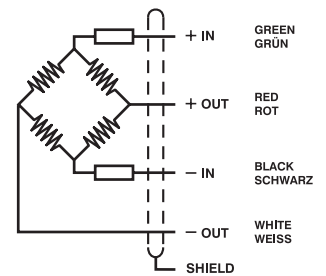


Dimensions in mm. Afmetingen in mm.

Transport weight - Transportgewicht: 0,5 kg

SPECIFICATIONS			TECHNISCHE GEGEVENS
Nominal capacities (Ln)	15-30-50-75-100 150-200-250-300 500-750-1000-1500	kg	Meetbereik (E _{max})
Accuracy class	3000	n. OIML (3)	Nauwkeurigheidsklasse
Minimum dead load	0	% E _{max}	Minimum voorlast
Service load	150	% E _{max}	Maximum belasting
Safe load limit	200	% E _{max}	Breuklast
Total error	< ± 0.017	% S _n (1) (3)	Samengesteld fout
Repeatability error	< ± 0.015	% S _n	Herhalingsnauwkeurigheid
Temperature effect: on zero	< ± 0.01	% S _n /5°K	Temperatuurafwijking: op nul
on sensitivity	< ± 0.006	% S _n /5°K	op meetbereik
Creep error (30 minutes)	< ± 0.016	% S _n	Kruipfout (30 min.)
Temperature compensation	-10...+40	°C	Temperatuur gecompenseerd
Temperature limits	-20...+50	°C	Temperatuur grenzen
Nominal sensitivity (S _n)	2 $\pm 0.1\%$	mV/V (2)	Signaalsterkte (S _n)
Nominal input voltage	10	V	Nom. voedingsspanning
Maximum input voltage	15	V	Max. voedingsspanning
Input impedance	400 ± 20	Ω	Ingangswaerstand
Output impedance	350 ± 3	Ω	Uitgangswaerstand
No load output	< ± 2	% S _n	Nulsignaal tolerantie
Insulation resistance	> 5000	M Ω	Isolatiewaerstand
Maximum deflection (at Ln)	0.2-0.4	mm	Meetweg (bij E _{max})

ELECTRICAL CONNECTION
ELEKTRISCHE AANSLUITING:



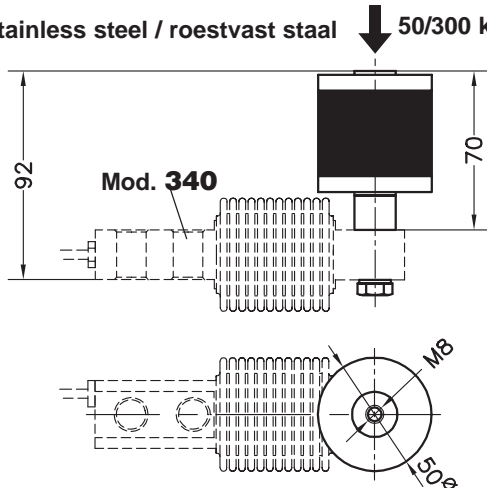
- (1) Total error: Non Linearity and Hysteresis / Samengestelde fout = niet lineariteit + hysteresis
 (2) E_{max} ≤ 20 kg, 2 $\pm 0.2\%$
 (3) 1500 kg: 2000 n. OIML

ACCESSORIES FOR MODEL 340

MONTAGE HULPSTUKKEN VOOR MODEL 340

- Acc. 30904:** Silent-block bearing up to 50 kg
(blue rubber)
Elastomeerlager (blauw), tot 50 kg
- Acc. 30905:** Silent-block bearing up to 300 kg
Elastomeerlager, tot 300 kg

Stainless steel / roestvast staal ↓ 50/300 kg max.



Transport weight - Transportgewicht: 0.5 kg

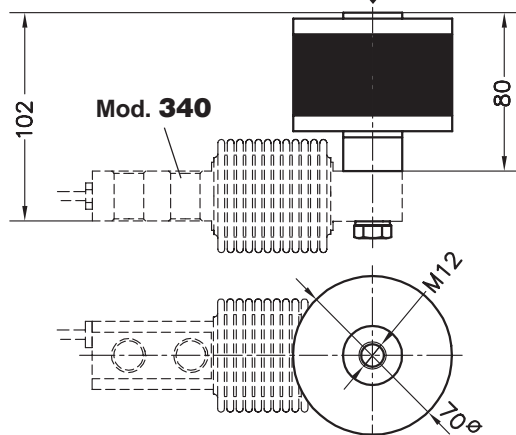


- Acc. 34903:** Base plate : steel, zinc plated
Fundatieplaat : verzinkt staal

- Acc. 34903i:** Base plate : stainless steel
Fundatieplaat : roestvast staal

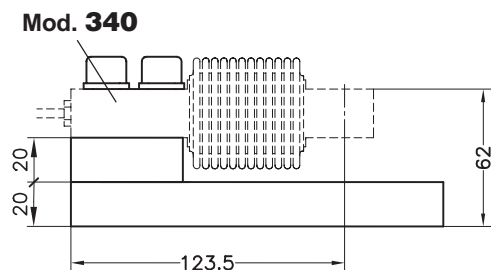
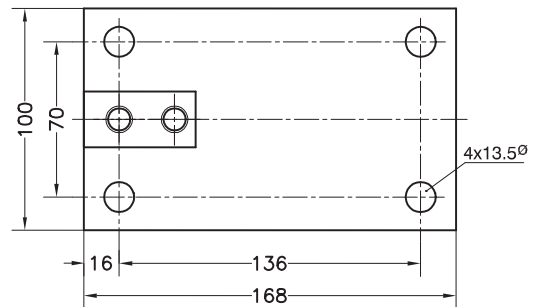
- Acc. 34906:** Silent-block bearing up to 750 kg
Elastomeerlager, tot 750 kg

Stainless steel / roestvast staal ↓ 750 kg max.

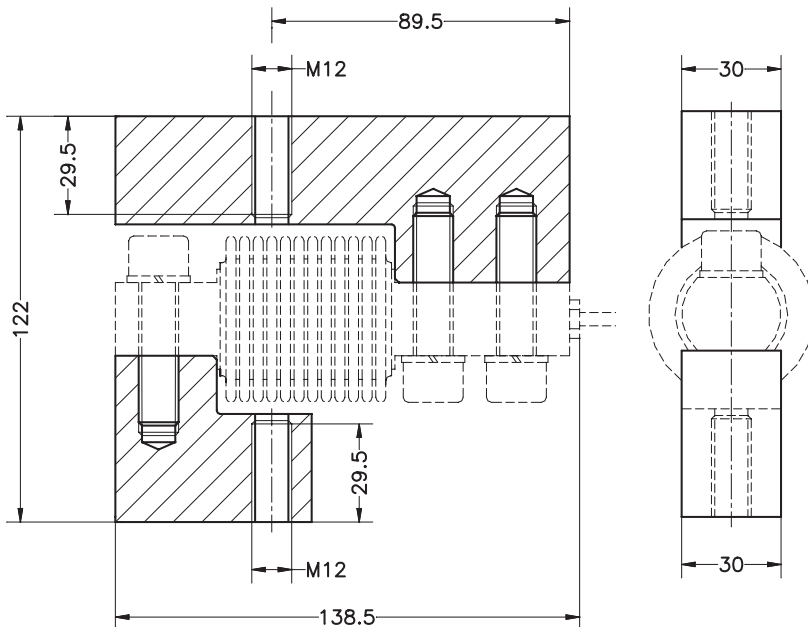


Transport weight - Transportgewicht: 0.5 kg

Dimensions in mm. Afmetingen in mm.



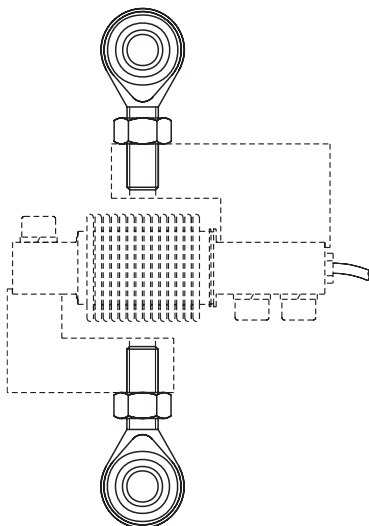
Transport weight - Transportgewicht: 3 kg

TENSION ACCESSORIES FOR MODEL 340
TREKKRACHTHULPSTUK VOOR MODEL 340
Acc. 34905


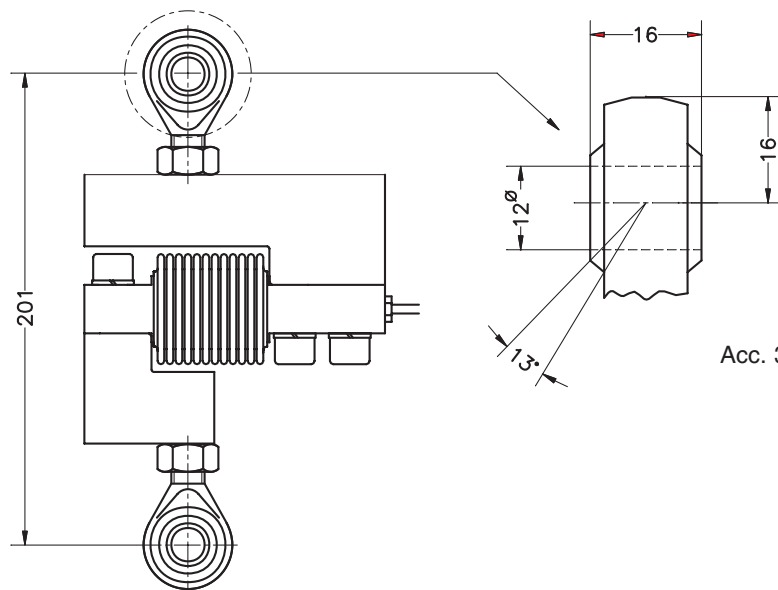
- Material : steel alloy, zinc plated
- Materiaal : verzinkt staal

Dimensions in mm. Afmetingen in mm.

Transport weight - Transportgewicht: 1.9 kg

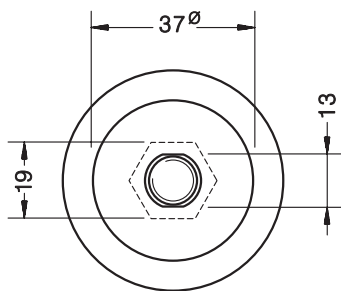
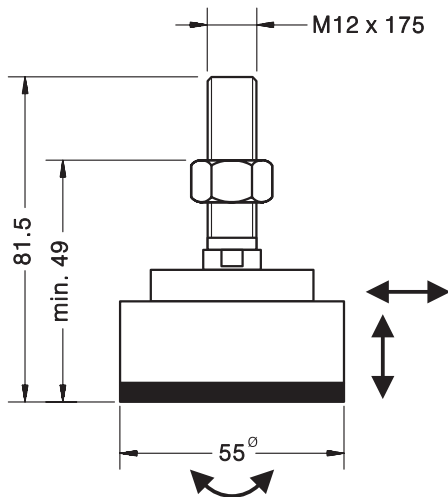
Acc. 31903

 Steel alloy zinc-plated
 Verzinkt staal

Transport weight - Transportgewicht: 0.4 kg

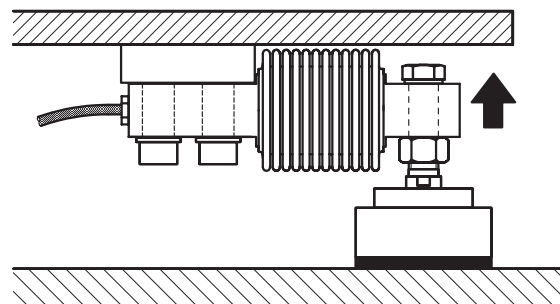
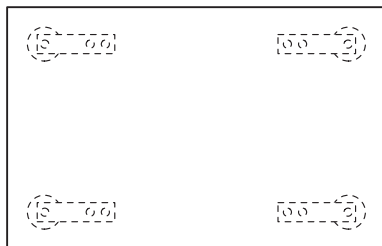
Mod. 340 + Acc. 31903 + Acc. 34905


Acc. 31903

LOAD FOOT ACCESSORY FOR MODELS 340-350
KOGELGELAGERDE STELVOET VOOR MODELLEN 340 EN 350



- Materials : stainless steel and rubber
- Materiaal : roestvast staal en elastomeer



Dimensions in mm. Afmetingen in mm.

Transport weight - Transportgewicht: 0,33 kg