

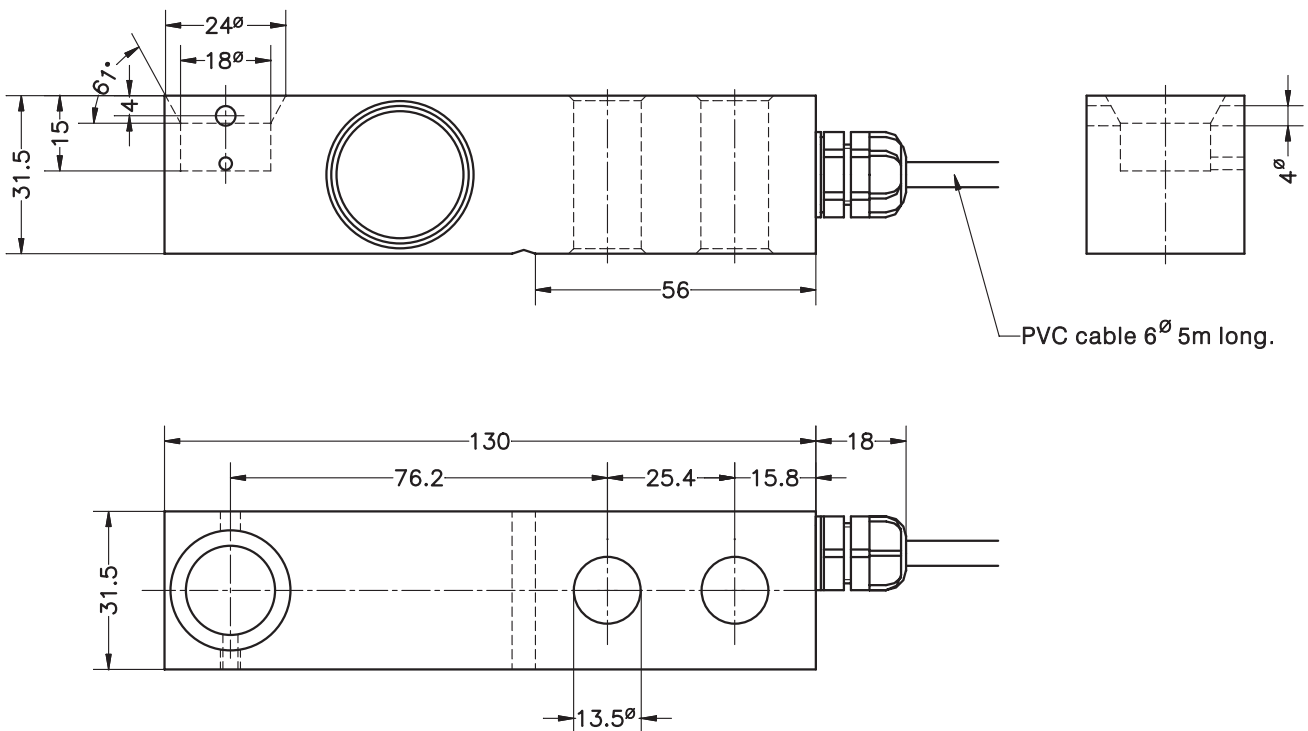


- Shear beam load cell
- Option T for model 350 with blind loading hole
- Versions:
  - **350 Ti:** Fully stainless steel construction. Hermetically sealed, fully welded, IP 68 (EN 60529)
  - **350 Ta:** Stainless steel construction. Silicone sealing, IP 66 (EN 60529)
- 3000 divisions O.I.M.L. R60 class C
- Pre-corner adjustment optimized for multicell systems
- Available in **ATEX**  version (optional) Zone 0-1-2 (gas) and 20-21-22 (dust)
- High accuracy on industrial applications specially for four load cells platforms
- Shearbeam krachtopnemer
- Model 350 T = speciale uitvoering voor extra lage taatsgelagerde stelvoet en gesloten bovenzijde
- Uitvoeringen:
  - **350 Ti:** roestvast staal, hermetisch dichtgelast, IP 68
  - **350 Ta:** roestvast staal, siliconen afdichting IP, 66
- Nauwkeurigheid 1:3000 OIML R60
- Onderling signaalstrekke verschil max 0,1%
- Leverbaar in **ATEX**  uitvoering (optie) zone 0-1-2- (gas) en 20-21-22 (stof)
- Hoge nauwkeurigheid bij industriële toepassing:
  - Platformweegschalen met 4 krachtopnemers
  - Tank-, menger- en siloweging

| Model       | Nominal capacity<br>Meetbereik<br>E max | Accuracy class<br>Nauwkeurigheid<br>n. OIML | Minimum division<br>Kleinste schaaldeel<br>v min | Service load<br>Max. belasting<br>150 % E max | Safe load<br>Breuklast<br>200 % E max |
|-------------|---|---|--|---|---------------------------------------|
| 350 300 kg  | 300 kg                                  | 3000  | 30 g   | 450 kg  | 600 kg                                |
| 350 500 kg  | 500 kg                                  | 3000  | 50 g   | 750 kg  | 1000 kg                               |
| 350 750 kg  | 750 kg                                  | 3000  | 75 g   | 1125 kg                                       | 1500 kg                               |
| 350 1000 kg | 1000 kg                                 | 3000  | 100 g  | 1500 kg                                       | 2000 kg                               |
| 350 1500 kg | 1500 kg                                 | 3000  | 150 g  | 2250 kg                                       | 3000 kg                               |
| 350 2000 kg | 2000 kg                                 | 3000  | 200 g  | 3000 kg                                       | 4000 kg                               |



# MODEL 350 T (300...2000 kg)



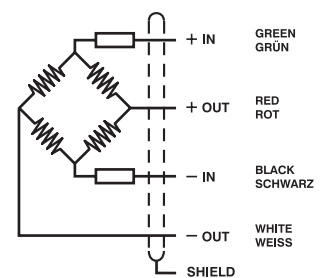
Dimensions in mm. Afmetingen in mm.

Transport weight - Transportgewicht: 0.9 kg

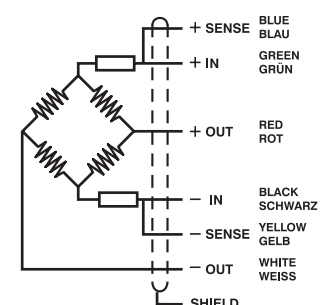
| SPECIFICATIONS                 |                            |                     | TECHNISCHE GEGEVENS              |
|--------------------------------|----------------------------|---------------------|----------------------------------|
| Nominal capacities (Ln)        | 300-500-750-1000-1500-2000 | kg                  | Meetbereiken (E <sub>max</sub> ) |
| Accuracy class                 | 3000                       | n. OIML             | Nauwkeurigheidsklasse            |
| Minimum dead load              | 0                          | % E <sub>max</sub>  | Minimum voorlast                 |
| Service load                   | 150                        | % E <sub>max</sub>  | Maximum belasting                |
| Safe load limit                | 200                        | % E <sub>Wmax</sub> | Breuklast                        |
| Total error                    | < ±0.017                   | %Sn (1)             | Samengestelde fout               |
| Repeatability error            | < ±0.015                   | %Sn                 | Herhalingsnauwkeurigheid         |
| Temperature effect:<br>on zero | < ±0.01                    | %Sn/5°K             | Temperatuurafwijking:<br>op nul  |
| on sensitivity                 | < ±0.006                   | %Sn/5°K             | op meetbereik                    |
| Creep error (30 minutes)       | < ±0.016                   | %Sn                 | Kruipfout (30 min.)              |
| Temperature compensation       | -10...+40                  | °C                  | Temperatuur gecompenseerd        |
| Temperature limits             | -20...+70                  | °C                  | Temperatuur grenzen              |
| Nominal sensitivity (Sn)       | 2                          | mV/V (2)            | Signaalsterkte (Sn)              |
| Nominal input voltage          | 10                         | V                   | Nom. voedingsspanning            |
| Maximum input voltage          | 15                         | V                   | Max. voedingsspanning            |
| Input impedance                | 400 ±20                    | Ω                   | Ingangswaerstand                 |
| Output impedance               | 350 ±3                     | Ω                   | Uitgangswaerstand                |
| No load output                 | < ±2                       | %Sn                 | Nulsignaal tolerantie            |
| Insulation resistance          | > 5000                     | MΩ                  | Isolatie weerstand               |
| Maximum deflection (at Ln)     | 0.2-0.4                    | mm                  | Meetweg (bij E <sub>max</sub> )  |

ELECTRICAL CONNECTION  
ELEKTRISCHE AANSLUITING:

## MOD. 350 Ta



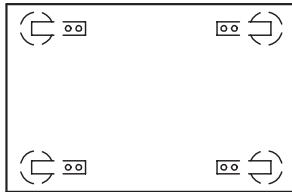
## MOD. 350 Ti



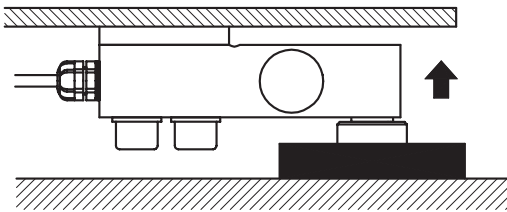
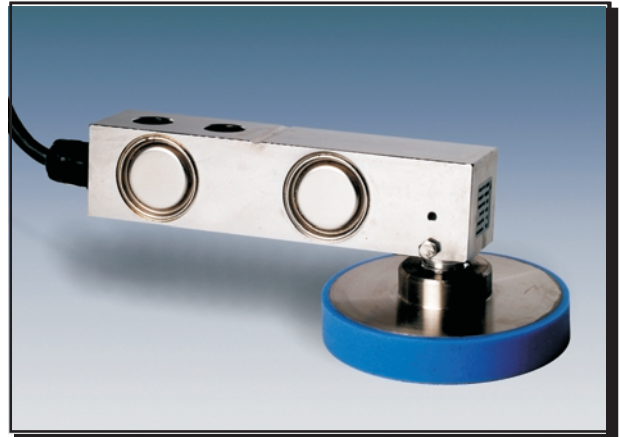
(1) Total error: Non Linearity and Hysteresis / Samengestelde fout = niet lineariteit + hysteresis

(2) Pre-corner adjustment optimized at ±0.05% by output current calibration /  
Voor gelijktijdige aansluiting van meer opnemers, afgeregeld binnen + of - 0,05%

**LOAD FOOT ACCESSORY FOR MODEL 350 T (0.3 ... 2 t)  
STAATSGELAGERDE STELVOET VOOR MODEL 350 T**

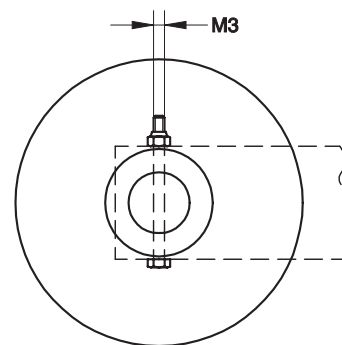
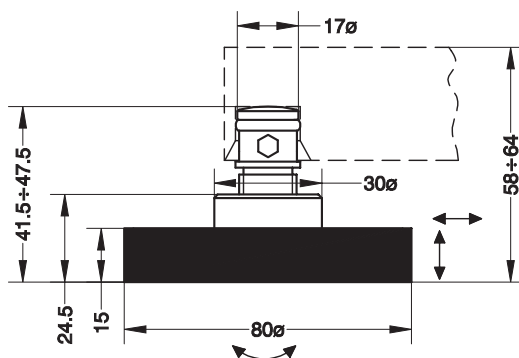


Mod. 350 T  
+  
Acc. 35916i



- **Materials: stainless steel and rubber**
- **Materiaal: roestvast staal en elastomeer**

**Acc. 35916 i : for Model 350 T (300...2000 kg) / voor model 350 T (300...2000 kg)**



Dimensions in mm. Afmetingen in mm.

Transport weight - transportgewicht: 0,3 kg